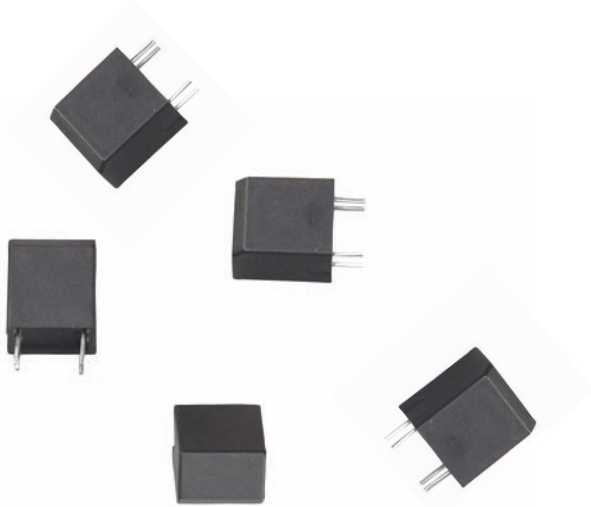


Optical Tilt Switch

Tilt Angles: 15°, 30° & 45° for Horizontal Mount PCB



RP-CUB-45-000-NB= 45° Tilt Angle
RP-CUB-30-000-NB= 30° Tilt Angle
RP-CUB-15-000-NB= 15° Tilt Angle

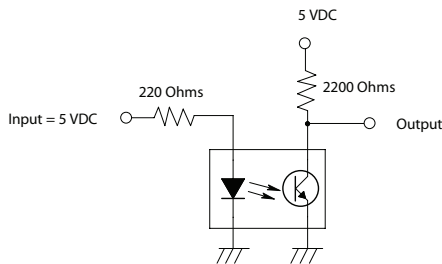
Materials & Specifications

- Housing: Glass-filled Polyamide, UL94-V0
- Photo Transistor: Silicon Photo Transistor
- Base: Glass-filled Polyamide, UL94-V0
- Tilt Angle Housing: Copper Alloy, Nickel plated
- Ball: Stainless steel
- IR Diode: Infrared LED
- Terminals: Tinned
- Temperature range: -25°C to +85°C (operating)
-40°C to +85°C (storage)
- Life: 100,000 hours typ.
- Solderability: Lead Free wave soldering
260 –5°C for 5 –0.5 seconds
- Tilt Angle Character: Tilt angle 0° to 5° Output current = I_{ceo} (off)
Tilt angle 5° to 25° Output current = *Undeterminant*
Tilt angle > 25° Output current = *Coupled I_c* (on)
- Patent: Pending

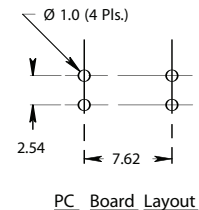
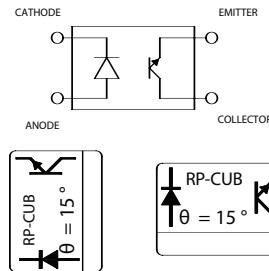
* Mercury Switch Alternative

Applications

- | | |
|-------------------|-------------------|
| Alarm Devices | Meters |
| Heating Equipment | Appliances |
| Games | Medical Equipment |
| Vending Machines | Handheld Devices |
| Seismic Equipment | |



Typical Circuit



ELECTRICAL CHARACTERISTICS (Ta = 25°C)

Items	Symbols	Min	Typ.	Max.	Unit	Conditions
INPUT						
Forward Voltage	V _f	-	1.2	1.2	V	I _f = 20mA
Reverse Current	I _r	-	-	10.0	µA	V _r = 5V
OUTPUT						
Dark Current	I _{ceo}	-	-	2	µA	V _{cc} = 10V
COUPLED						
Output Current	I _c	0.5	5.0	-	mA	V _{ce} = 5V
Rise/Fall Time	T _r /T _f	-	5.0	-	µs	I _c = 0.8mA, V _{cc} = 30V, R _L = 1K Ω

