

Centrifugal Force Switch

Normally Open (N.O.) Triggers@ 1.5 g MIN. To 5.0 g



RV-RUG-00-000-BB

Specifications

1. Contact Rating: 0.4VA max. @20VAC or DC
2. Dielectric Strength: 500VDC min. for 1 minute
3. Insulation Resistance: 1000 MegOhms (min) @ 100VDC
4. Temperature Range: -25°C to + 85°C (operating)
-40°C to + 85°C (storage)
5. Life: 100,000 cycles typ.
6. Solderability: 260°C for 5 –0.5 seconds
7. Patent: Pending

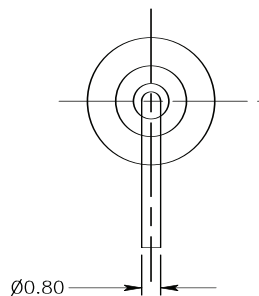
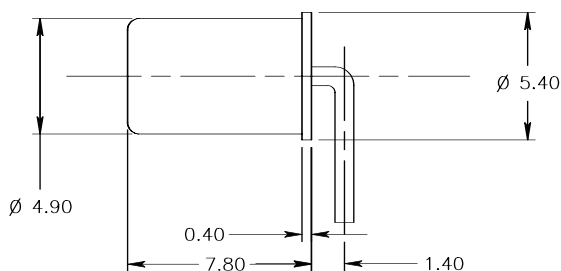
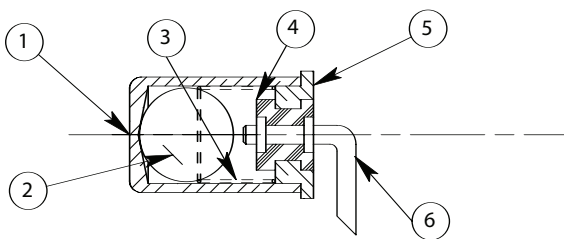
Materials

1. Housing: Copper Alloy, Tin plated
2. Ball, Contact: Copper Alloy, Gold plated over Nickel
3. Spring: Stainless Steel, Gold plate over Nickel
4. Cover, Housing: Copper Alloy, Tin plated
5. Insulation: LCP 30% GF, UL94-V0
6. Terminal, Contact: Copper Alloy, Gold plate over Nickel

* Mercury Switch Alternative

Applications

- Rotational Devices
- Tire Centrifugal Force Detection
- Direction or Axis Motion
- Motion Control



CENTRIFUGAL FORCE
ACCELERATION DIRECTION
NORMALLY OPEN (N.O.)
TRIGGERS@ 1.5g min. to 5.0 g

